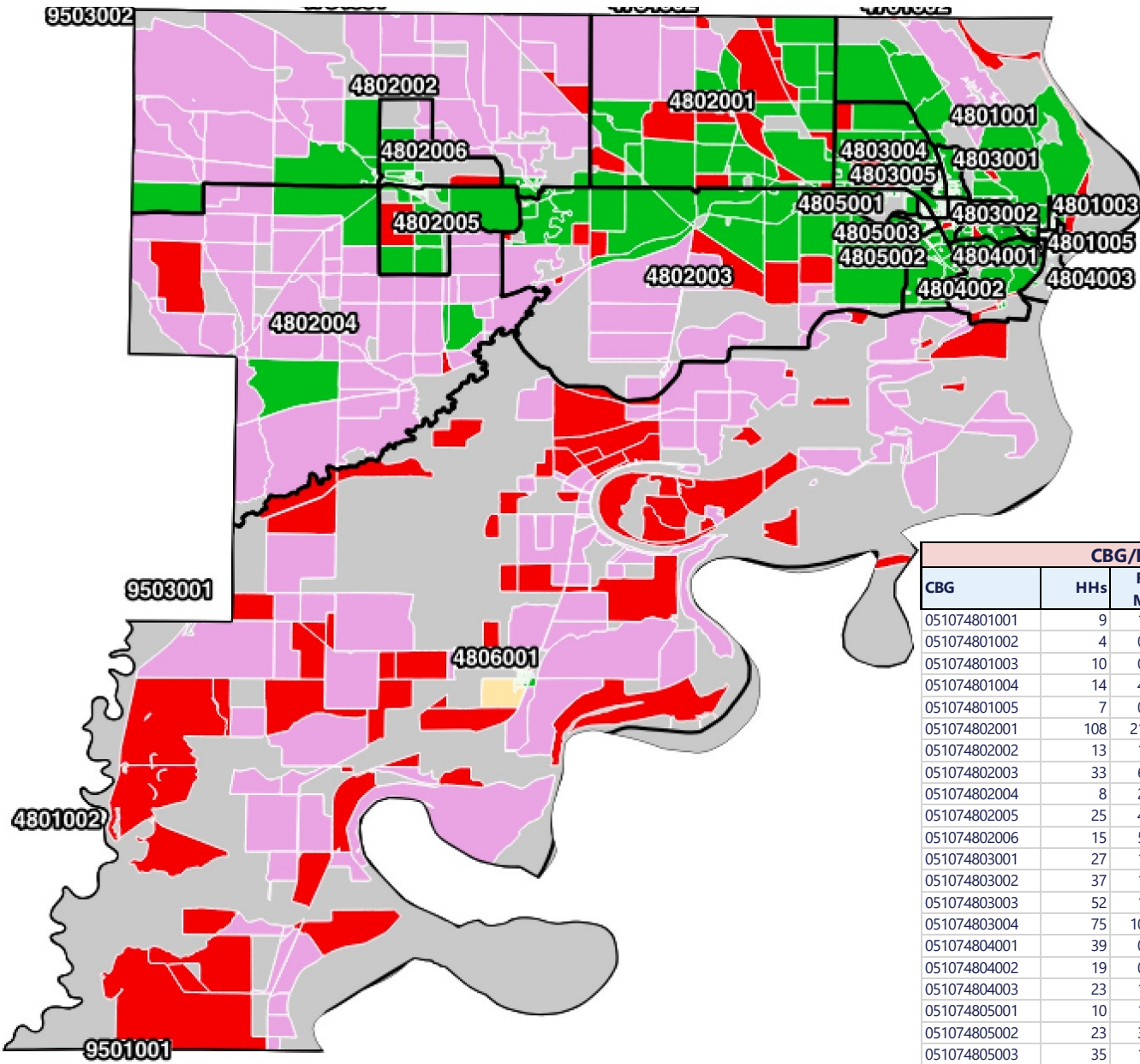
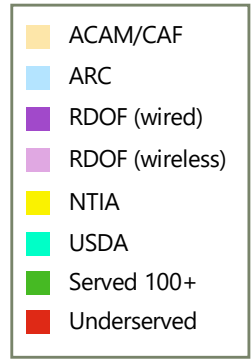


Phillips County



CBG/Project Estimates to Fill the Broadband Gap with FTTH						
CBG	HHs	Fiber Miles	CapEx	CAPEX/HH	Subsidy Range	Subsidy Range/HH
051074801001	9	1.282	\$ 83,040	\$ 8,868	\$62,280 - \$62,402	\$7,192 - \$7,206
051074801002	4	0.203	\$ 37,517	\$ 8,659	\$27,984 - \$28,138	\$6,996 - \$7,034
051074801003	10	0.380	\$ 49,741	\$ 4,254	\$25,910 - \$37,306	\$2,591 - \$3,731
051074801004	14	4.972	\$ 238,286	\$ 15,724	\$178,715 - \$203,754	\$12,334 - \$14,062
051074801005	7	0.147	\$ 38,165	\$ 4,732	\$21,483 - \$28,624	\$3,069 - \$4,089
051074802001	108	21.650	\$ 1,006,713	\$ 8,601	\$749,333 - \$755,034	\$6,938 - \$6,991
051074802002	13	1.998	\$ 119,967	\$ 8,508	\$88,986 - \$89,975	\$6,845 - \$6,921
051074802003	33	6.144	\$ 306,091	\$ 8,603	\$227,852 - \$229,568	\$6,940 - \$6,993
051074802004	8	2.764	\$ 144,624	\$ 17,750	\$108,468 - \$125,964	\$13,853 - \$16,087
051074802005	25	4.359	\$ 226,202	\$ 8,327	\$166,623 - \$169,651	\$6,665 - \$6,786
051074802006	15	5.051	\$ 242,628	\$ 15,455	\$181,971 - \$206,880	\$12,131 - \$13,792
051074803001	27	1.417	\$ 106,528	\$ 3,225	\$42,183 - \$79,896	\$1,562 - \$2,959
051074803002	37	1.879	\$ 135,919	\$ 2,953	\$47,742 - \$101,939	\$1,290 - \$2,755
051074803003	52	1.392	\$ 128,503	\$ 1,751	\$4,579 - \$96,377	\$88 - \$1,853
051074803004	75	10.484	\$ 515,097	\$ 6,180	\$337,195 - \$386,323	\$4,517 - \$5,175
051074804001	39	0.495	\$ 78,287	\$ 1,287	\$0 - \$58,715	\$0 - \$1,506
051074804002	19	0.569	\$ 66,124	\$ 2,829	\$21,726 - \$49,593	\$1,166 - \$2,662
051074804003	23	1.657	\$ 112,383	\$ 4,202	\$57,976 - \$84,287	\$2,539 - \$3,692
051074805001	10	1.305	\$ 86,560	\$ 7,935	\$62,728 - \$64,920	\$6,273 - \$6,492
051074805002	23	3.457	\$ 184,046	\$ 7,341	\$129,638 - \$138,034	\$5,678 - \$6,046
051074805003	35	1.339	\$ 108,591	\$ 2,377	\$25,038 - \$81,444	\$714 - \$2,323
051074805004	34	0.891	\$ 91,022	\$ 1,953	\$9,900 - \$68,267	\$291 - \$2,005
051074806001	302	40.006	\$ 1,929,259	\$ 5,667	\$1,209,501 - \$1,446,945	\$4,005 - \$4,791
Total	921	114	\$ 6,035,294	\$ 6,554	\$3,855,380 - \$4,526,470	\$4,187 - \$4,915

Phillips County: Helena, West Helena

