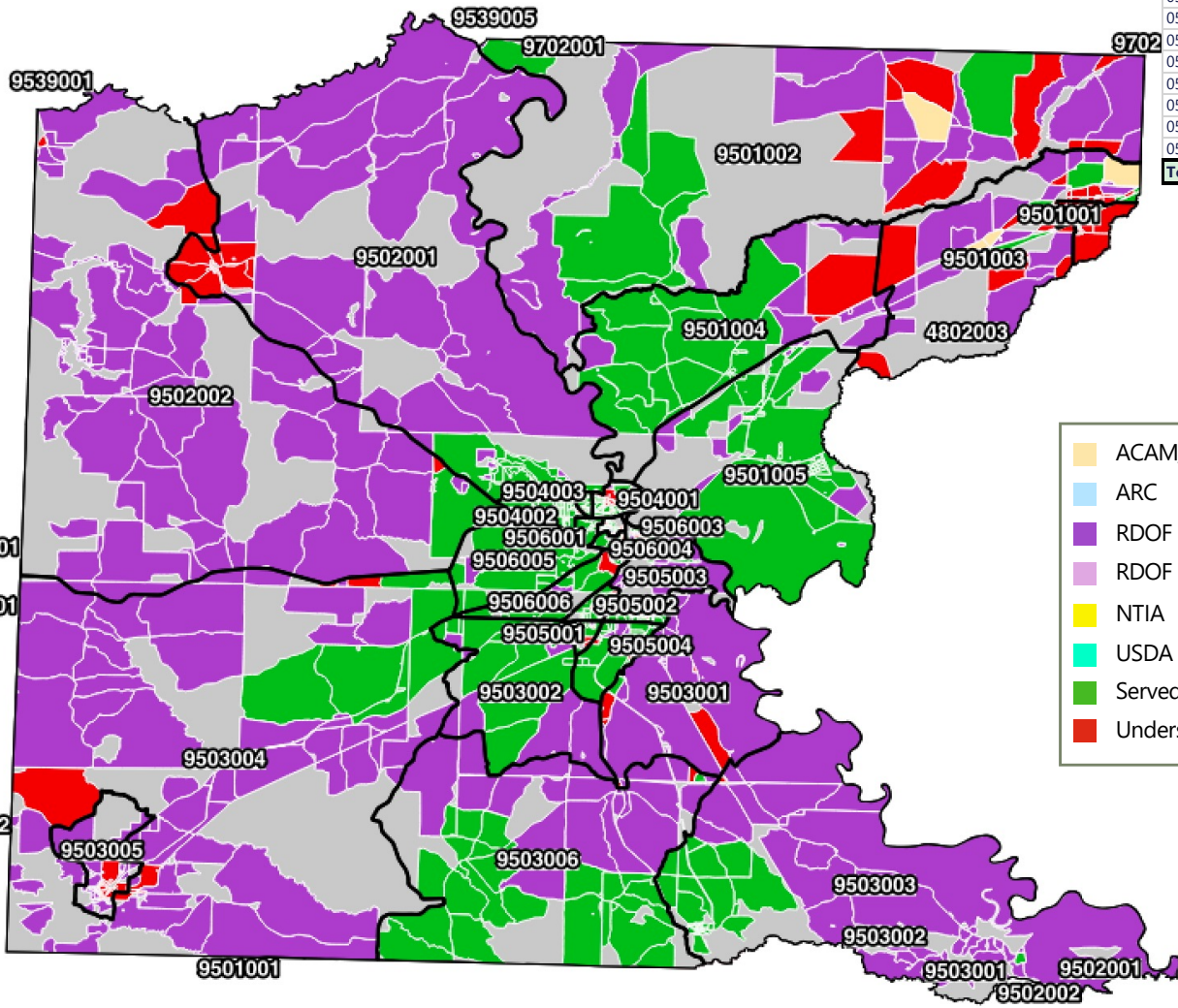


# Ouachita County

CBG/Project Estimates to Fill the Broadband Gap with FTTH						
CBG	HHs	Fiber Miles	CapEx	CAPEX/HH	Subsidy Range	Subsidy Range/HH
051039501001	210	10.623	\$ 651,149	\$ 2,387	\$151,737 - \$488,362	\$724 - \$2,330
051039501002	74	3.666	\$ 251,695	\$ 2,681	\$75,366 - \$188,771	\$1,019 - \$2,551
051039501003	158	3.612	\$ 335,417	\$ 1,399	\$0 - \$251,563	\$0 - \$1,590
051039501004	23	0.866	\$ 83,929	\$ 2,975	\$29,808 - \$62,947	\$1,313 - \$2,772
051039501005	11	0.003	\$ 36,774	\$ 2,623	\$10,560 - \$27,581	\$960 - \$2,507
051039502001	153	8.639	\$ 531,217	\$ 2,751	\$166,596 - \$398,413	\$1,089 - \$2,604
051039502002	12	2.485	\$ 136,932	\$ 10,690	\$102,699 - \$108,334	\$8,558 - \$9,028
051039503001	80	1.244	\$ 158,136	\$ 1,256	\$0 - \$118,602	\$0 - \$1,483
051039503003	15	0.160	\$ 47,453	\$ 2,443	\$11,706 - \$35,590	\$780 - \$2,373
051039503004	39	0.473	\$ 86,600	\$ 1,472	\$0 - \$64,950	\$0 - \$1,645
051039503005	224	3.253	\$ 356,287	\$ 870	\$0 - \$267,215	\$0 - \$1,193
051039503006	1	0.238	\$ 36,099	\$ 35,378	\$27,074 - \$33,716	\$27,074 - \$33,716
051039504001	135	3.686	\$ 291,020	\$ 1,441	\$0 - \$218,265	\$0 - \$1,621
051039504002	22	2.495	\$ 145,411	\$ 5,889	\$92,982 - \$109,058	\$4,226 - \$4,957
051039504003	12	0.326	\$ 49,385	\$ 3,395	\$20,787 - \$37,039	\$1,732 - \$3,087
051039505001	13	2.787	\$ 149,603	\$ 10,787	\$112,202 - \$118,622	\$8,631 - \$9,125
051039505002	20	2.003	\$ 125,036	\$ 5,531	\$77,373 - \$93,777	\$3,869 - \$4,689
051039505003	26	1.098	\$ 88,042	\$ 2,688	\$26,485 - \$66,031	\$1,025 - \$2,556
051039505004	11	2.097	\$ 119,717	\$ 10,334	\$89,787 - \$93,907	\$8,291 - \$8,671
051039506001	5	0.078	\$ 32,860	\$ 5,851	\$20,944 - \$24,645	\$4,189 - \$4,929
051039506002	25	1.254	\$ 97,852	\$ 3,193	\$38,273 - \$73,389	\$1,531 - \$2,936
051039506003	112	0.896	\$ 162,575	\$ 729	\$0 - \$121,932	\$0 - \$1,087
051039506004	51	1.015	\$ 112,296	\$ 1,465	\$0 - \$84,222	\$0 - \$1,640
051039506005	112	16.586	\$ 769,666	\$ 6,151	\$502,753 - \$577,249	\$4,489 - \$5,154
051039506006	2	0.067	\$ 30,186	\$ 15,775	\$22,640 - \$25,825	\$12,371 - \$14,112
<b>Total</b>	<b>1,546</b>	<b>70</b>	<b>\$ 4,885,337</b>	<b>\$ 3,161</b>	<b>\$1,605,774 - \$3,664,003</b>	<b>\$1,039 - \$2,370</b>



- ACAM/CAF
- ARC
- RDOF (wired)
- RDOF (wireless)
- NTIA
- USDA
- Served 100+
- Underserved

# Ouachita County: Camden

