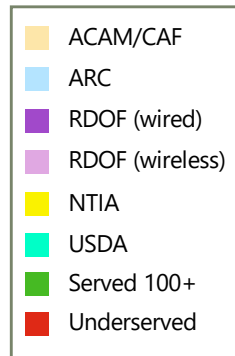
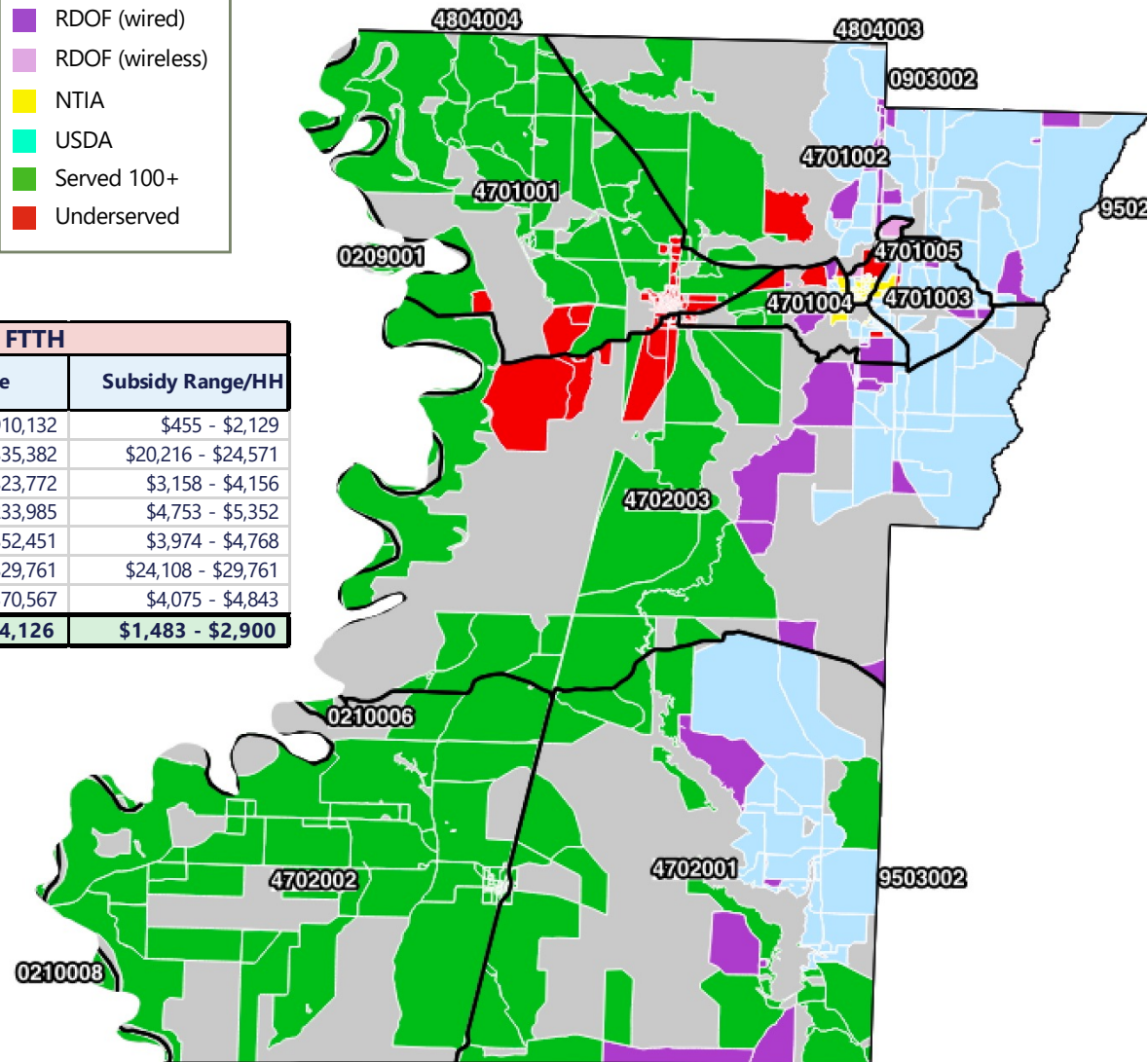


Lafayette County



CBG/Project Estimates to Fill the Broadband Gap with FTTH

CBG	HHs	Fiber Miles	CapEx	CAPEX/HH	Subsidy Range	Subsidy Range/HH
050734701001	428	19.656	\$ 1,213,510	\$ 2,118	\$194,571 - \$910,132	\$455 - \$2,129
050734701002	1	0.293	\$ 38,814	\$ 26,234	\$29,111 - \$35,382	\$20,216 - \$24,571
050734701003	6	0.012	\$ 31,696	\$ 4,821	\$18,065 - \$23,772	\$3,158 - \$4,156
050734701004	44	6.158	\$ 311,980	\$ 6,415	\$207,789 - \$233,985	\$4,753 - \$5,352
050734701005	11	0.872	\$ 69,934	\$ 5,637	\$43,719 - \$52,451	\$3,974 - \$4,768
050734702002	1	0.148	\$ 32,144	\$ 31,424	\$24,108 - \$29,761	\$24,108 - \$29,761
050734702003	77	9.699	\$ 494,089	\$ 5,737	\$311,754 - \$370,567	\$4,075 - \$4,843
Total	567	37	\$ 2,192,168	\$ 3,867	\$841,042 - \$1,644,126	\$1,483 - \$2,900



Lafayette County: Lewsville and Stamps

