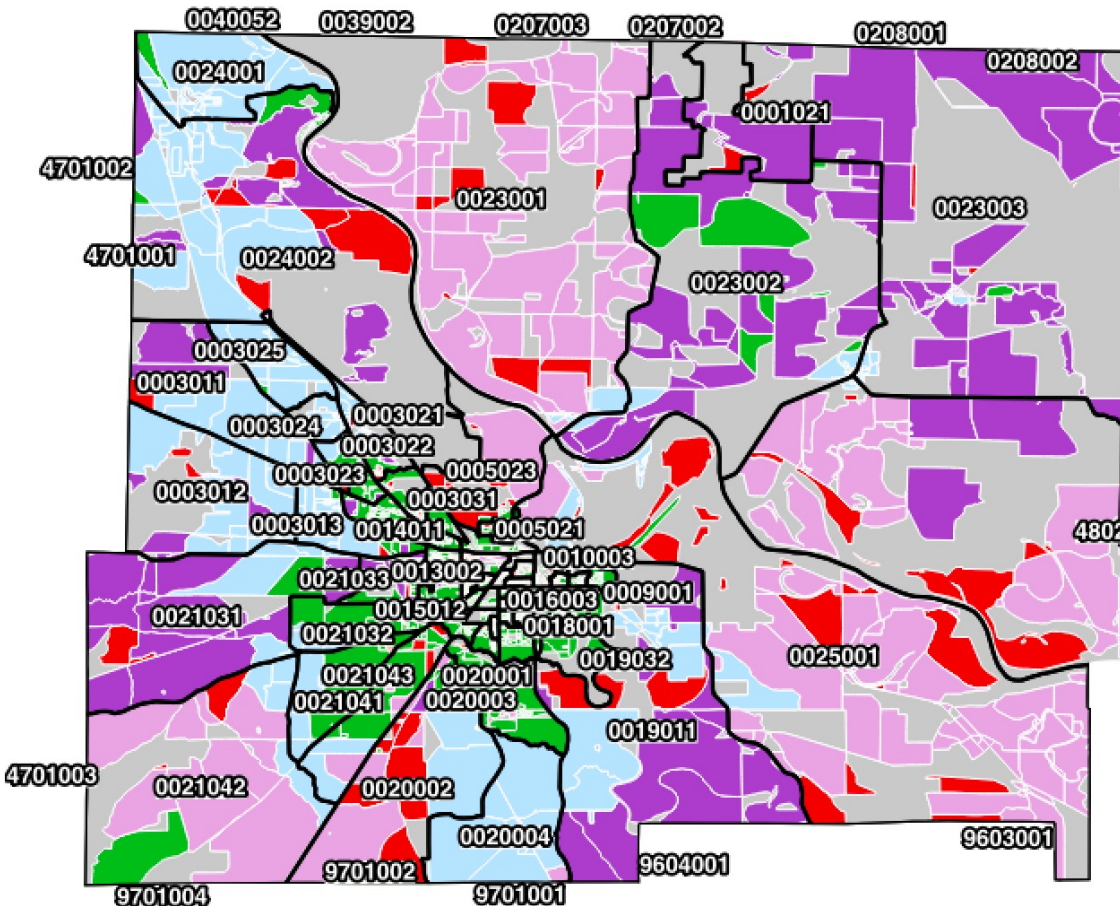
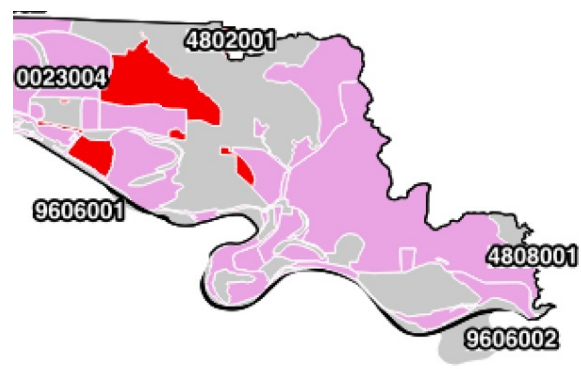


# Jefferson County



- ACAM/CAF
- ARC
- RDOF (wired)
- RDOF (wireless)
- NTIA
- USDA
- Served 100+
- Underserved



CBG/Project Estimates to Fill the Broadband Gap with FTTH						
CBG	HHs	Fiber Miles	CapEx	CAPEX/HH	Subsidy Range	Subsidy Range/HH
050690001021	2	0.258	\$ 37,061	\$ 20,579	\$27,796 - \$32,914	\$15,975 - \$18,916
050690003011	24	3.084	\$ 173,958	\$ 6,528	\$116,762 - \$130,468	\$4,865 - \$5,436
050690003012	4	1.448	\$ 87,320	\$ 22,627	\$65,490 - \$78,407	\$17,511 - \$20,964
050690003013	1	0.036	\$ 27,774	\$ 31,203	\$20,830 - \$25,701	\$23,943 - \$29,541
050690003021	111	4.175	\$ 294,637	\$ 1,934	\$30,108 - \$220,978	\$271 - \$1,991
050690003022	104	3.494	\$ 263,902	\$ 1,819	\$16,269 - \$197,927	\$157 - \$1,905
050690003023	50	1.459	\$ 127,378	\$ 1,827	\$8,220 - \$95,533	\$164 - \$1,911
050690003024	1	0.028	\$ 27,510	\$ 26,789	\$20,632 - \$25,127	\$20,632 - \$25,127
050690003031	110	2.095	\$ 207,660	\$ 1,164	\$0 - \$155,745	\$0 - \$1,414
050690003032	30	1.203	\$ 102,115	\$ 2,683	\$30,620 - \$76,586	\$1,021 - \$2,553
050690003033	82	1.333	\$ 157,372	\$ 1,199	\$0 - \$118,029	\$0 - \$1,439
050690005021	44	1.242	\$ 116,399	\$ 1,925	\$11,541 - \$87,299	\$262 - \$1,984
050690005022	95	3.259	\$ 240,615	\$ 1,812	\$14,216 - \$180,461	\$150 - \$1,900
050690005023	32	6.794	\$ 330,481	\$ 9,649	\$247,861 - \$254,531	\$7,777 - \$7,987
050690009001	2	0.258	\$ 37,061	\$ 20,579	\$27,796 - \$32,914	\$15,975 - \$18,916
050690009002	11	0.160	\$ 42,559	\$ 3,148	\$16,344 - \$31,919	\$1,486 - \$2,902
050690009003	31	0.973	\$ 91,626	\$ 2,235	\$17,748 - \$68,719	\$573 - \$2,217
050690009004	57	1.325	\$ 127,155	\$ 1,527	\$0 - \$95,366	\$0 - \$1,686
050690010001	25	1.242	\$ 97,879	\$ 3,215	\$38,611 - \$73,410	\$1,552 - \$2,952
050690010002	33	1.227	\$ 103,641	\$ 2,420	\$24,997 - \$77,731	\$757 - \$2,355
050690010003	89	2.105	\$ 189,574	\$ 1,403	\$0 - \$142,181	\$0 - \$1,593
050690012001	37	0.697	\$ 86,773	\$ 1,633	\$0 - \$65,080	\$0 - \$1,765
050690012002	54	2.586	\$ 178,813	\$ 2,568	\$49,242 - \$134,110	\$906 - \$2,467
050690012003	117	3.033	\$ 248,377	\$ 1,407	\$0 - \$186,283	\$0 - \$1,596
050690012004	73	2.024	\$ 168,748	\$ 1,579	\$0 - \$126,561	\$0 - \$1,725
050690013001	107	3.065	\$ 244,481	\$ 1,571	\$0 - \$183,361	\$0 - \$1,718
050690013002	58	1.831	\$ 150,065	\$ 1,877	\$12,391 - \$112,549	\$214 - \$1,948
050690013003	42	1.188	\$ 110,622	\$ 1,913	\$10,530 - \$82,967	\$251 - \$1,975
050690014011	1	0.148	\$ 32,144	\$ 31,424	\$24,108 - \$29,761	\$24,108 - \$29,761
050690014012	1	0.129	\$ 31,281	\$ 35,234	\$23,460 - \$29,207	\$26,966 - \$33,572
050690014021	24	0.695	\$ 77,029	\$ 2,489	\$19,834 - \$57,772	\$826 - \$2,407
050690014022	60	2.112	\$ 163,828	\$ 2,018	\$21,244 - \$122,871	\$355 - \$2,054
050690014023	9	0.694	\$ 62,361	\$ 6,208	\$40,912 - \$46,771	\$4,546 - \$5,197
050690015011	5	1.417	\$ 87,665	\$ 16,812	\$65,749 - \$75,749	\$13,150 - \$15,150
050690015021	1	0.148	\$ 32,144	\$ 31,424	\$24,108 - \$29,761	\$24,108 - \$29,761
050690015022	1	0.148	\$ 32,144	\$ 31,424	\$24,108 - \$29,761	\$24,108 - \$29,761
050690015023	142	1.033	\$ 197,556	\$ 671	\$0 - \$148,167	\$0 - \$1,043
050690015024	3	0.294	\$ 40,910	\$ 12,916	\$30,683 - \$33,761	\$10,228 - \$11,254
050690016001	118	2.925	\$ 245,389	\$ 1,359	\$0 - \$184,042	\$0 - \$1,560
050690016002	28	0.962	\$ 88,823	\$ 2,452	\$22,095 - \$66,617	\$789 - \$2,379
050690016003	60	1.827	\$ 149,064	\$ 1,776	\$6,766 - \$111,798	\$113 - \$1,672
050690016004	43	0.857	\$ 95,385	\$ 1,498	\$0 - \$71,539	\$0 - \$1,664
050690017001	67	1.933	\$ 161,997	\$ 1,697	\$2,326 - \$121,498	\$35 - \$1,813
050690017002	44	2.064	\$ 147,117	\$ 2,623	\$42,258 - \$110,338	\$960 - \$2,508
050690017003	29	1.487	\$ 113,310	\$ 3,133	\$43,245 - \$84,982	\$1,471 - \$2,891
050690017004	11	0.367	\$ 49,955	\$ 3,821	\$23,740 - \$37,466	\$2,158 - \$3,406
050690018001	10	0.660	\$ 61,891	\$ 5,468	\$38,059 - \$46,418	\$3,806 - \$4,642
050690018002	13	0.762	\$ 67,959	\$ 4,507	\$36,978 - \$50,969	\$2,844 - \$3,921
050690018003	4	0.111	\$ 34,159	\$ 7,819	\$24,626 - \$25,619	\$6,157 - \$6,405
050690019011	19	1.788	\$ 116,757	\$ 5,431	\$71,524 - \$87,567	\$3,768 - \$4,614
050690019031	2	0.056	\$ 30,191	\$ 14,375	\$22,643 - \$25,425	\$11,322 - \$12,712
050690019032	50	0.332	\$ 87,317	\$ 1,026	\$0 - \$65,487	\$0 - \$1,310
050690020001	3	0.195	\$ 36,960	\$ 11,600	\$27,720 - \$29,811	\$9,240 - \$9,937
050690020002	173	8.777	\$ 560,681	\$ 2,527	\$149,302 - \$420,511	\$865 - \$2,436
050690020003	9	0.340	\$ 48,524	\$ 4,671	\$27,076 - \$36,393	\$3,008 - \$4,044
050690021031	3	0.367	\$ 43,257	\$ 14,351	\$32,442 - \$36,417	\$11,304 - \$12,689
050690021032	5	0.258	\$ 40,865	\$ 7,452	\$28,949 - \$30,648	\$5,790 - \$6,130
050690021033	20	0.699	\$ 72,554	\$ 2,991	\$25,963 - \$54,416	\$1,328 - \$2,783
050690021041	36	3.540	\$ 205,461	\$ 4,987	\$119,668 - \$154,096	\$3,324 - \$4,280
050690021042	21	0.454	\$ 66,700	\$ 2,475	\$16,964 - \$50,025	\$813 - \$2,397
050690021043	16	4.033	\$ 204,116	\$ 12,141	\$153,087 - \$166,296	\$9,646 - \$10,479
050690023001	18	3.020	\$ 164,458	\$ 8,242	\$120,728 - \$123,344	\$6,579 - \$6,722
050690023002	3	0.085	\$ 31,437	\$ 10,233	\$23,577 - \$24,597	\$8,215 - \$8,570
050690023003	136	12.842	\$ 669,012	\$ 4,181	\$343,759 - \$501,759	\$2,519 - \$3,676
050690023004	16	1.879	\$ 116,462	\$ 6,697	\$79,046 - \$87,346	\$5,035 - \$5,563
050690024002	58	3.702	\$ 231,651	\$ 3,275	\$93,476 - \$173,738	\$1,612 - \$2,997
050690025001	87	6.389	\$ 369,925	\$ 3,529	\$162,472 - \$277,444	\$1,866 - \$3,187
<b>Total</b>	<b>2,773</b>	<b>121</b>	<b>\$ 9,139,995</b>	<b>\$ 3,297</b>	<b>\$2,918,751 - \$6,854,996</b>	<b>\$1,053 - \$2,472</b>

# Jefferson County: Pine Bluff

